

Windows CE 6.0
USB to Mouse Device Driver
Version 2.0.0

ILI TECHNOLOGY CORP.

8F, No.38, Taiyuan St., Jhubei City, Hsinchu County 302, Taiwan, R.O.C.
Tel.886-3-5600099; Fax.886-3-5600055
<http://www.ilitek.com>

Table of Contents

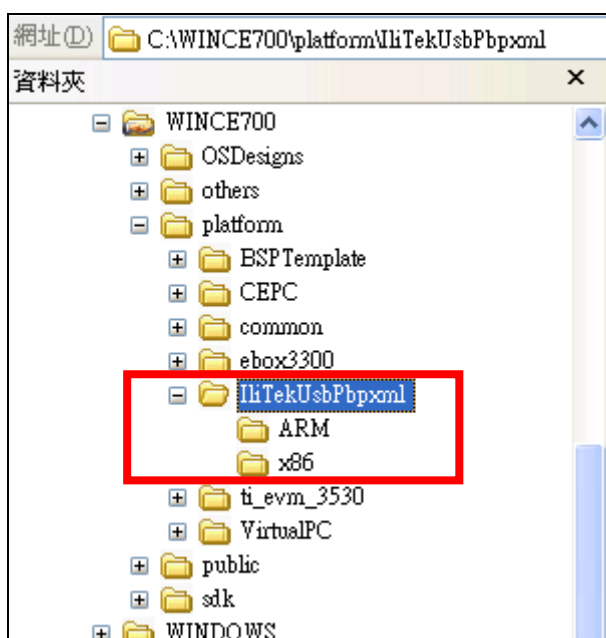
Section	Page
1. Description	3
2. Building USB Driver	3
3. Touch Calibration	5
4. Firmware Upgrade	5

1. Description

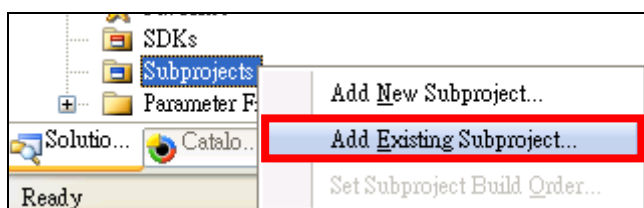
This document describes the installation steps of USB mouse driver for WinCE platform. Before installing this driver, customer should know which type of CPU customer's machine is based on because ILITEK USB mouse driver contains two different CPU types that are x86-based and ARM-based to support customer's target machine. ILITEK USB mouse driver will also include a useful tool to support touch firmware upgrade and calibration functions. This tool's shortcut can be found on the desktop of target machine after downloading WinCE image to customer's machine. Below we will introduce the installation steps and how to use this tool to do calibrate and upgrade.

2. Building USB Driver

- a. Extract the given ZIP to the “\$(WINCE600)\ PLATFORM” folder



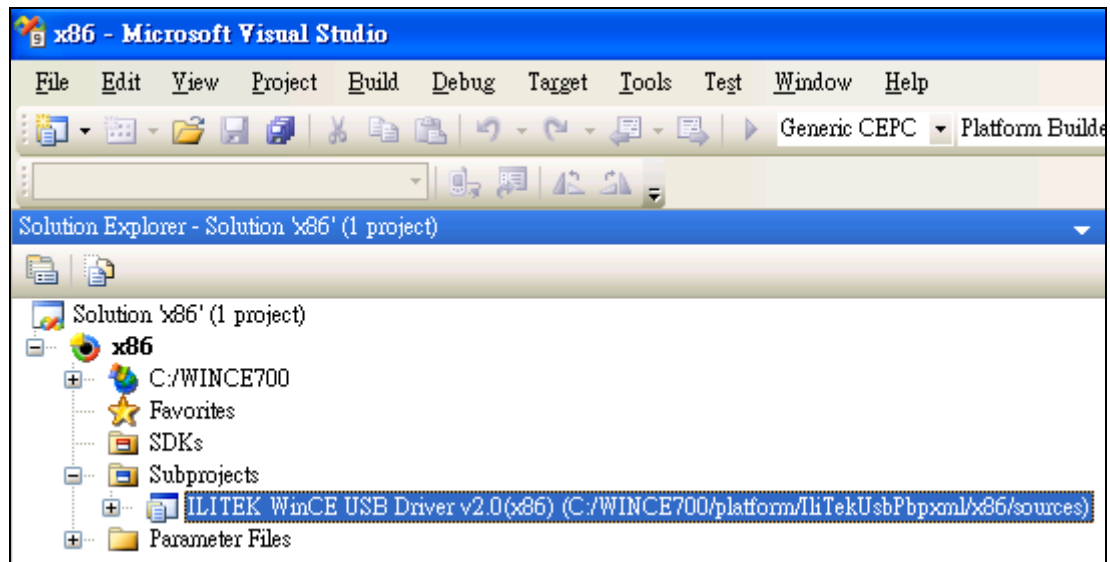
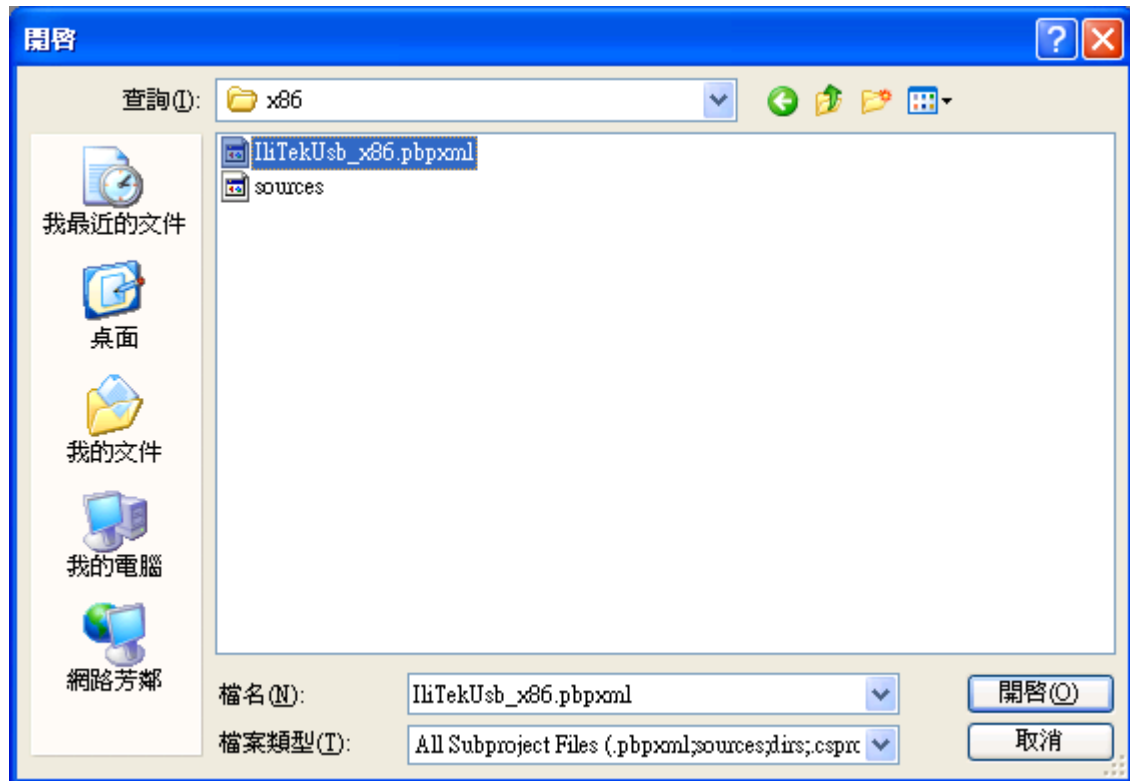
- b. Add the existing project to user's platform builder



c. Select the “IliTekUsb_xxx.pbpxml” file to add existing subproject to platform builder

* Select “IliTekUsb_x86.pbpxml” from “IliTekUsbPbpxml\x86” if platform is x86-based

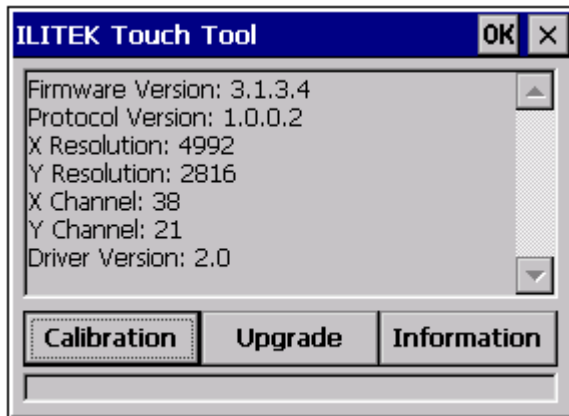
* Select “IliTekUsb_ARM.pbpxml” from “IliTekUsbPbpxml\ARM” if platform is ARM-based



d. Rebuild platform and then download to target machine

3. Touch Calibration

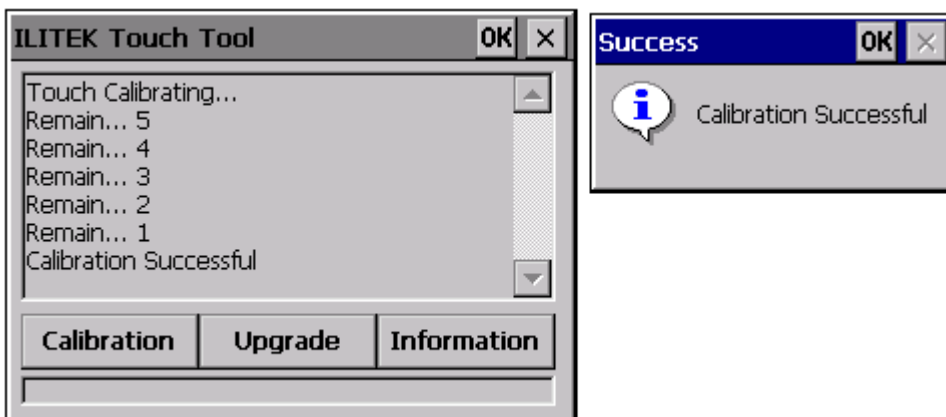
- a. Execute the “TouchTool” shortcut on WinCE desktop to startup the application as following figure



- b. Click on “Calibration” button to do calibrate

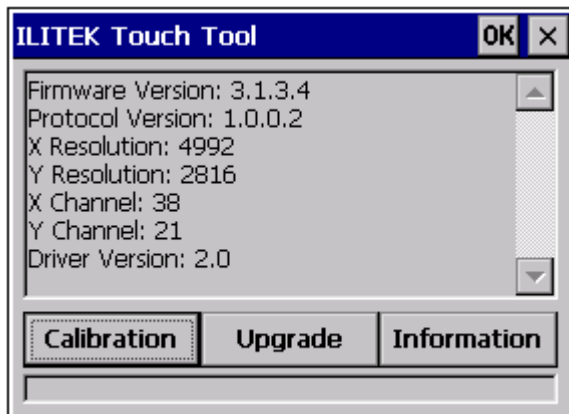
*** Please note that do not put anything on touch screen when user executes this procedure**

- c. Application will show the message box to indicate the state of success or failure after calibration

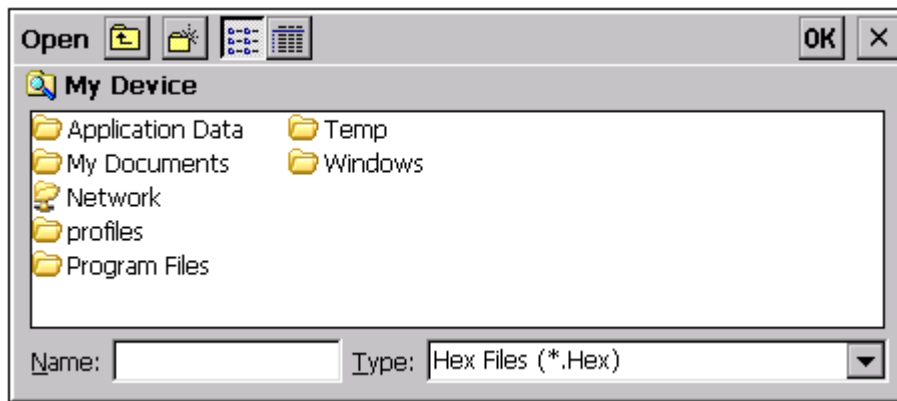


4. Firmware Upgrade

- a. Execute the “TouchTool” shortcut on WinCE desktop to startup the application as following figure



- b. Click on “Upgrade” button to do firmware upgrade



- c. Select HEX file to do upgrade
d. Application will show the message box to indicate the state of success or failure after upgrade

