

Windows CE 7.0

USB to Touch Device Driver

Version 2.1.1

ILI TECHNOLOGY CORP.

8F, No.1, Taiyuan 2nd-St., Jhubei City, Hsinchu County 302, Taiwan, R.O.C.
Tel.886-3-5600099; Fax.886-3-5600055
<http://www.ilitek.com>

Table of Contents

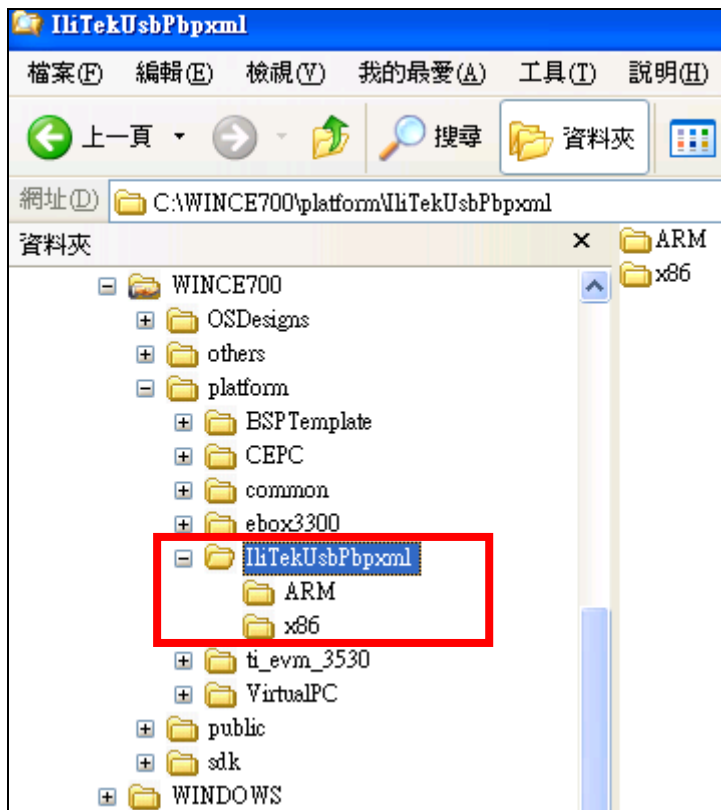
Section	Page
1. Description	3
2. Building USB Driver	3
3. Debug Function	4
4. Transfer Extend.....	5
5. Firmware Upgrade	5

1. Description

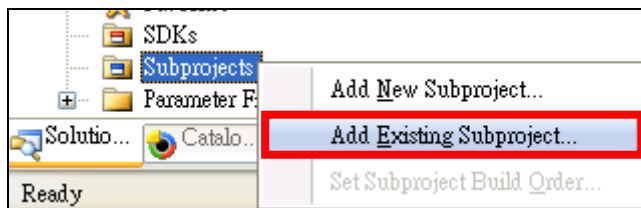
This document describes the installation steps of USB touch driver for WinCE platform. Before installing this driver, customer should know which type of CPU customer's machine is based on because ILITEK USB touch driver contains two different CPU types that are x86-based and ARM-based to support customer's target machine. ILITEK USB touch driver will also include a useful tool to support touch firmware upgrade and calibration functions. This tool's shortcut can be found on the desktop of target machine after downloading WinCE image to customer's machine. Below we will introduce the installation steps and how to use this tool to do calibrate and upgrade.

2. Building USB Driver

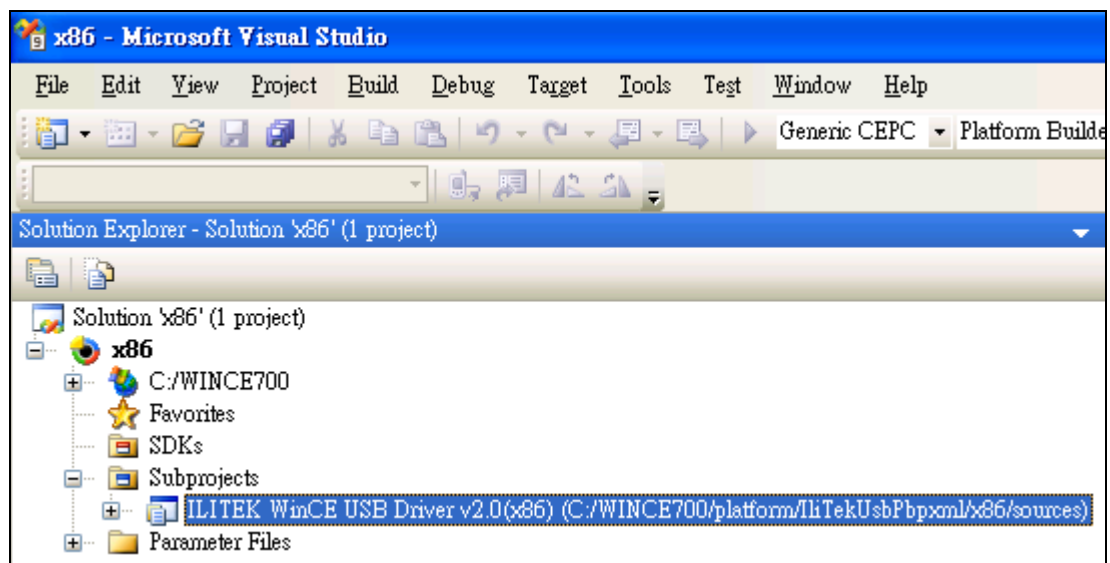
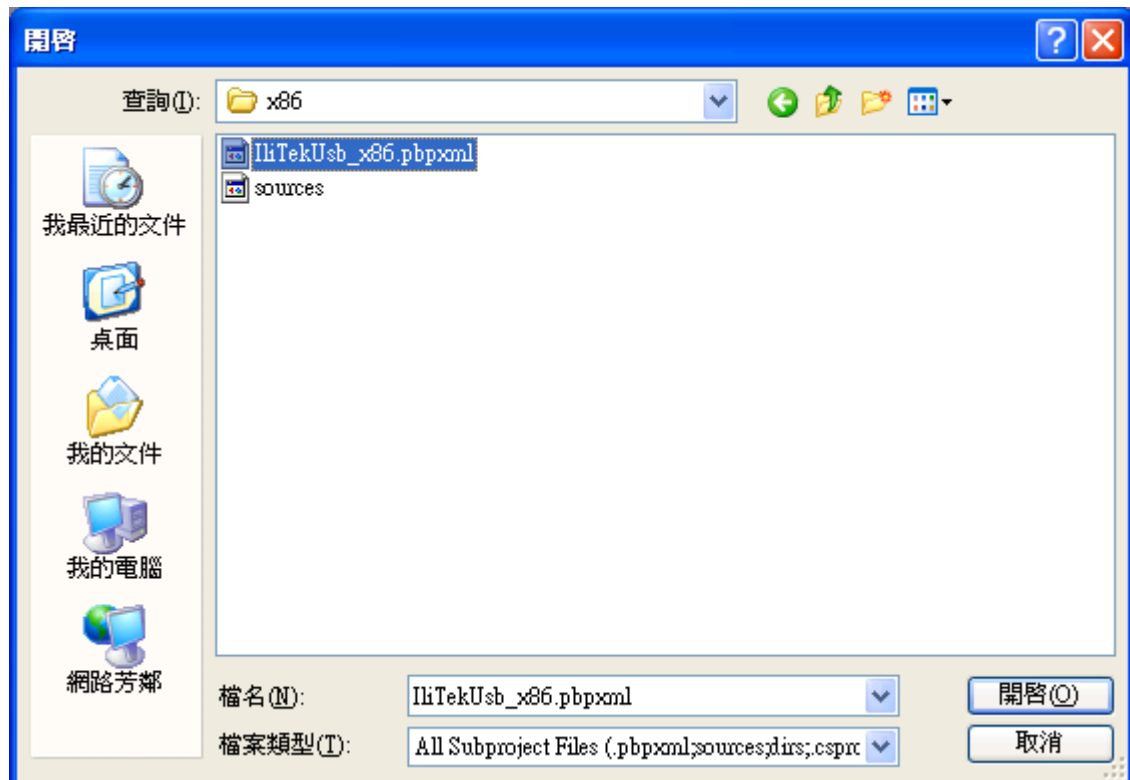
- a. Extract the given ZIP file that contains the ILITEK USB Driver to the “\$(WINCE700)\ PLATFORM” directory (default is in “C:\WINCE700\ PLATFORM\”)



- b. Add the existing project to user's platform builder



- c. Select the “IliTekUsb_xxx.pbpxml” file to add existing subproject to platform builder
 - * Select “IliTekUsbPbpxml\x86\IliTekUsb_x86.pbpxml” if platform is x86-based
 - * Select “IliTekUsbPbpxml\ARM\IliTekUsb_ARM.pbpxml” if platform is ARM-based



d. Rebuild platform and then download to target machine

3. Debug Function

Edit "IliTekUsbPbpxml\xxx\IliTekUsb_XXX.reg" file if user want to output debug message.

If "EnableDbgMsg" value is equal to zero, the debug function will be disabled.

Otherwise, the debug function will be enable if "EnableDbgMsg" value is non-zero.

```
[HKEY_LOCAL_MACHINE\Drivers\HID\ClientDrivers\IliTekUsb]
"Prefix"="ILI"
"DLL"="IliTekUsb.DLL"
"Order"=dword:255
"EnableDbgMsg"=dword:0
```

4. Transfer Extend

Edit "IliTekUsbPbpxml\xxx\IliTekUsb_XXX.reg" file if user want to transfer data extend.

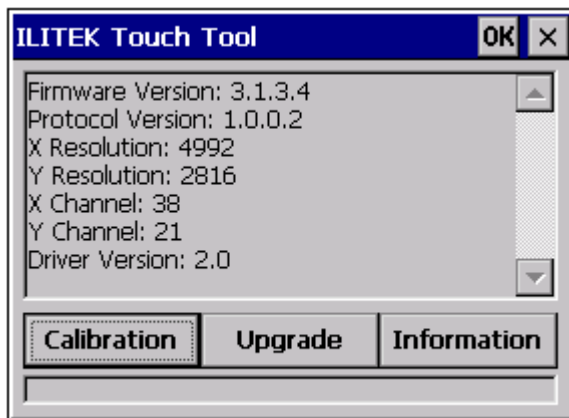
If "EnableExt" value is equal to zero, the transfer data extend will be disabled.

Otherwise, the transfer data extend will be enable if "EnableExt" value is non-zero.

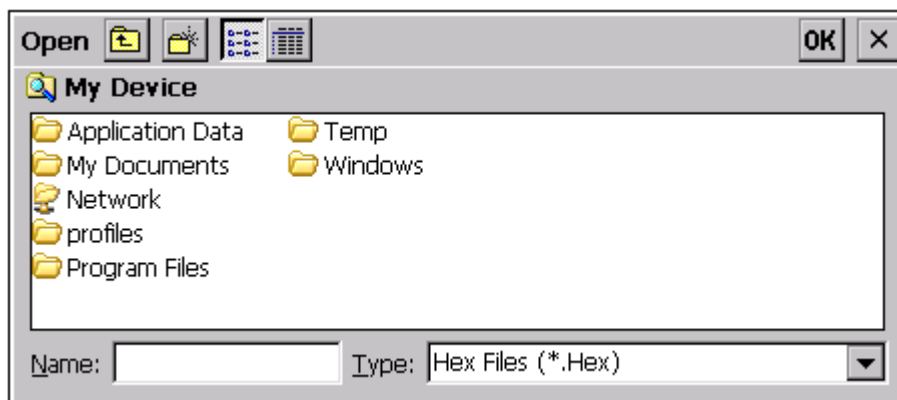
```
[HKEY_LOCAL_MACHINE\Drivers\HID\ClientDrivers\IliTekUsb]
"Prefix"="ILI"
"DLL"="IliTekUsb.DLL"
"Order"=dword:255
"EnableDbgMsg"=dword:0
"EnableExt"=dword:0
"EnableRdInfo"=dword:0
```

5. Firmware Upgrade

- a. Execute the "TouchTool" shortcut on WinCE desktop to startup the application as following figure



- b. Click on "Upgrade" button to do firmware upgrade



- c. Select HEX file to do upgrade

- d. Application will show the message box to indicate the state of success or failure after upgrade

